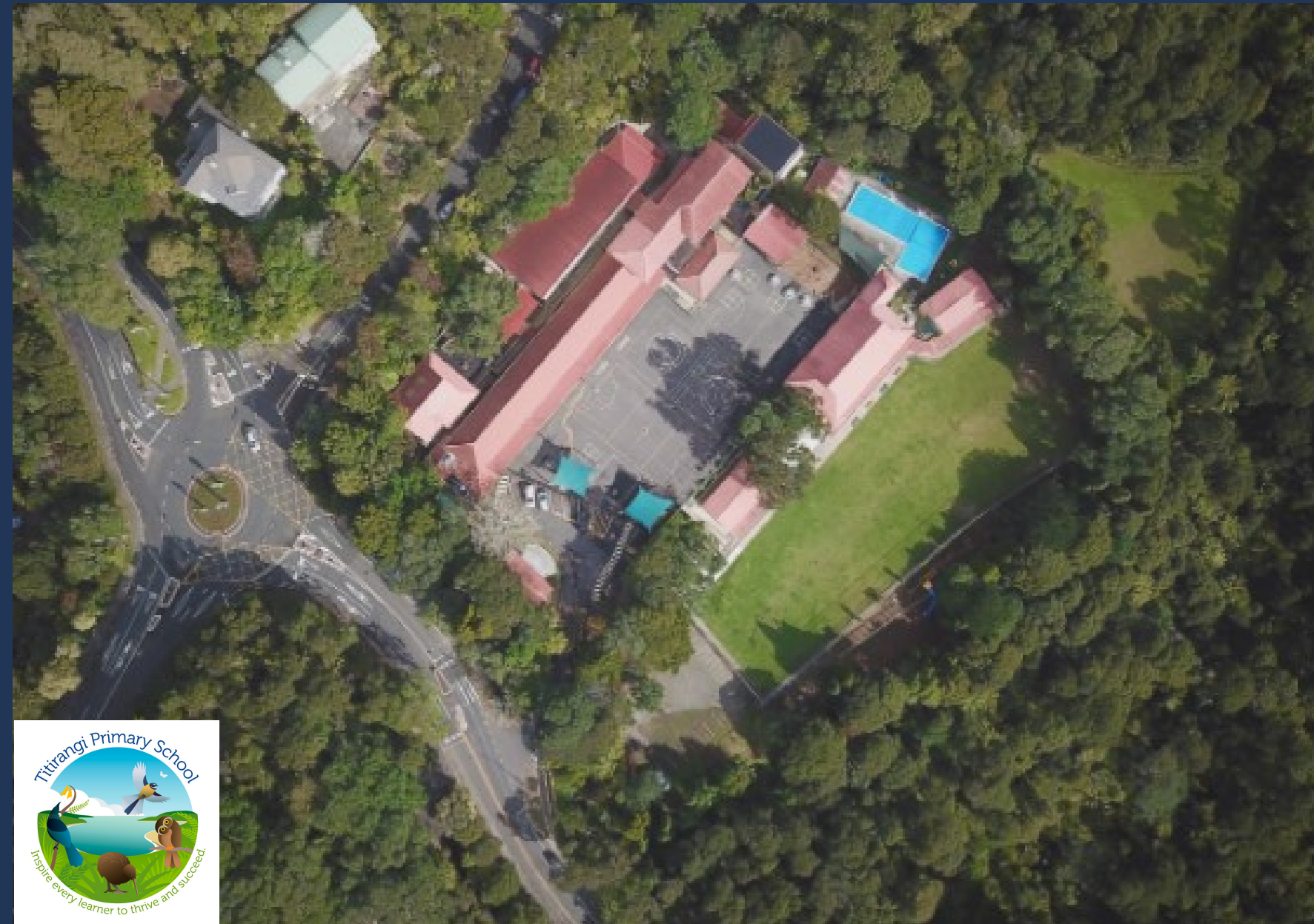


# What's next for Titirangi School?

## Our property Vision for 2022 - 2025

We are lucky to have such a unique and precious school environment. In the next three years we'll work with the Ministry of Education and our school community to utilise a range of funding sources to continue to build a learning environment that also reduces our environmental impact and supports our local ecology and biodiversity. Here is how we will do it.

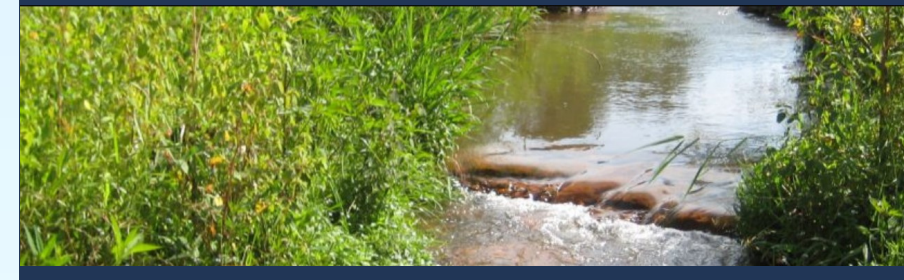


### OUR ENVIRONMENT



At Titirangi School we connect with bush and native wildlife of our precious whenua. Spaces where children can learn outdoors will allow for greater connection and understanding.

### RENEWABLE RESOURCES



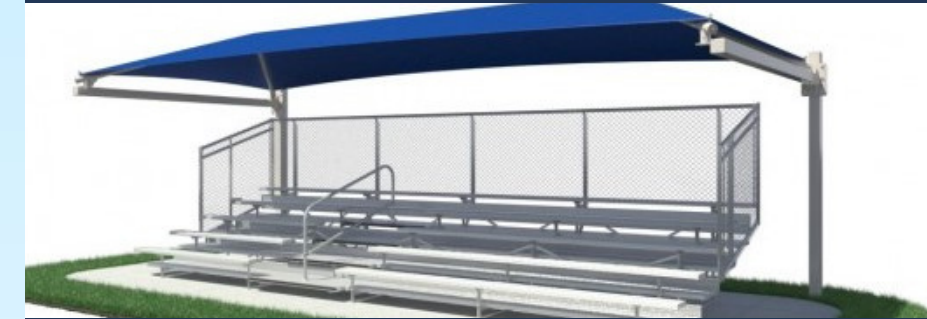
Improve the quality of water in our stream and the biodiversity of the local environment to restore native species and ecological balance.

### INFRASTRUCTURE



An ongoing program of upgrades to bathrooms and facilities, with better accessibility and play areas across the school.

### CANOPIES



We have a vision of covering the all-weather turf section of the field, making it usable rain or shine. We'll continue to maintain and enhance the sections of shade sail and canopy that have been introduced in recent years.

### ENERGY EFFICIENCY



With our north facing rooftop solar panels would enable us to reduce operating costs overtime. Water Tanks for rain harvesting and LED lighting for efficiency.

### CLASSROOM UPGRADES



Working with the Ministry of Education we will continue the program of modernisation and classroom upgrades.